

LEFTBANK ANNEX CLUBROOM

LET'S CREATE AN EVENT TO REMEMBER

*Our lower level of the Leftbank Annex is a great space for off-site work meetings, gatherings, or cocktail hours.
Let's imagine the possibilities together!*



The Clubroom, nearly 4,000 square feet on the lower level of the Leftbank Annex, is available for weekday, daytime meetings Monday through Thursday. It can be divided into three distinct spaces with retractable glass walls. The two breakout rooms have installed projectors and screens.

Multipurpose Room—ideal if you need a dynamic setup and more square footage for the occasion

This is largest workspace in the Clubroom and works best for groups of between 20-40 that do not need breakout space.

Breakout Rooms A & B—ideal for a small guest count with a basic meeting setup

Each breakout room comfortably seats up to 10 at the furniture provided and includes an installed projectors and pull-down screens.

Space rental includes a production manager to answer facility-related questions before and during your work session and:

- Six parking spots in private Annex lot
- Basic utilities and adjustable lighting
- Installed projectors in breakout rooms
- Pre- and post-event cleaning
- Free Wi-Fi for up to 100 concurrent casual use devices
- Office and lounge furniture in Clubroom (setup & breakdown included)

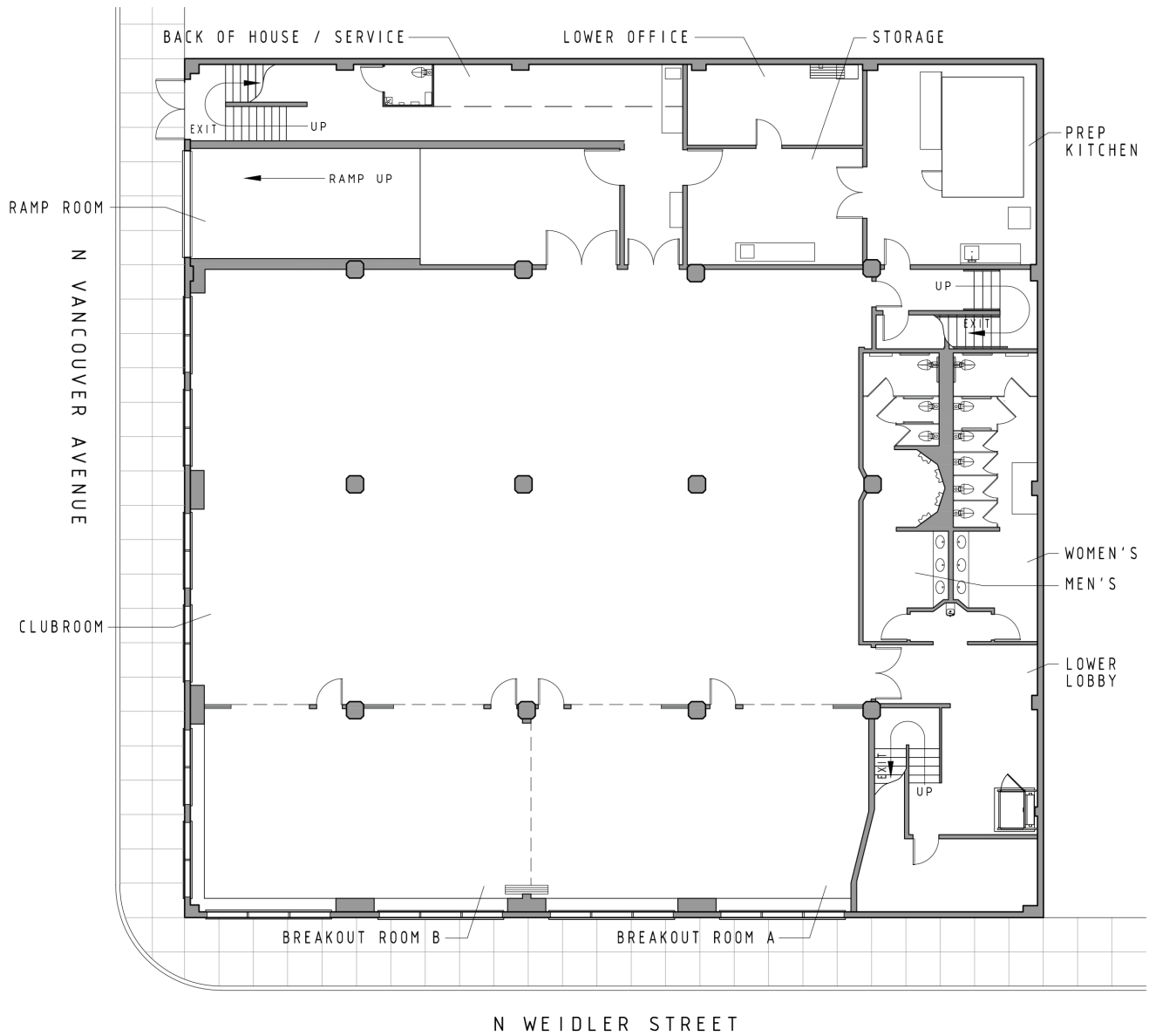
Valid for bookings from January 1st-December 30th, 2021 | Terms subject to change based on COVID-19 mandates & OHA regulations.

LEFTBANK ANNEX

A PORTLAND EVENT SPACE

101 N WEIDLER STREET | VENUES@ELEPHANTSDELI.COM

CLUBROOM FLOOR PLAN



CLUBROOM CAPACITY

SPACE	SQUARE FOOTAGE	MAXIMUM CAPACITY	SEATED DINNER 15 sf pp	RECEPTION 7 sf pp	THEATER STYLE 12 sf pp
Clubroom	3,800	500	200	300	200
Breakout Rooms	1,674	included in Clubroom	57	57	50
Room A	837	included in Clubroom	20	50	50
Room B	837	included in Clubroom	20	50	50
Entire Floor	5,474	500	200	350	tbd