

LEFTBANK ANNEX GREATROOM

LET'S CREATE AN EVENT TO REMEMBER

Located on the upper level of the Annex, its soaring ceiling and expansive windows flood the space with natural light.

Let's imagine the possibilities together!



The Greatroom is over 7,000 square feet located on the upper level of the Annex. Its wide-open floor plan makes it the perfect venue for larger events.

Included in the rental of the Greatroom are the following smaller spaces connected to the larger open area:

- *The Nest – an elevated area above the crowd perfect for DJs, photo booths or speakers.*
- *The Mezzanine – a lounge-like space overlooking the great room with standing room for up to 73 guests.*
- *The Greenroom – a private retreat for bridal parties, artists, speakers and volunteers, which includes lounge furniture, mini fridge, and full bathroom.*

Space rental includes:

- Six parking spots in private Annex lot
- Basic AV and in-house systems
- Basic utilities and adjustable lighting
- Pre- and post-event cleaning
- Fire Marshall permit if required
- 12-hour event day, including load in and load out
- Free Wi-Fi for up to 100 concurrent casual use devices
- On-site house manager
- In-house furniture

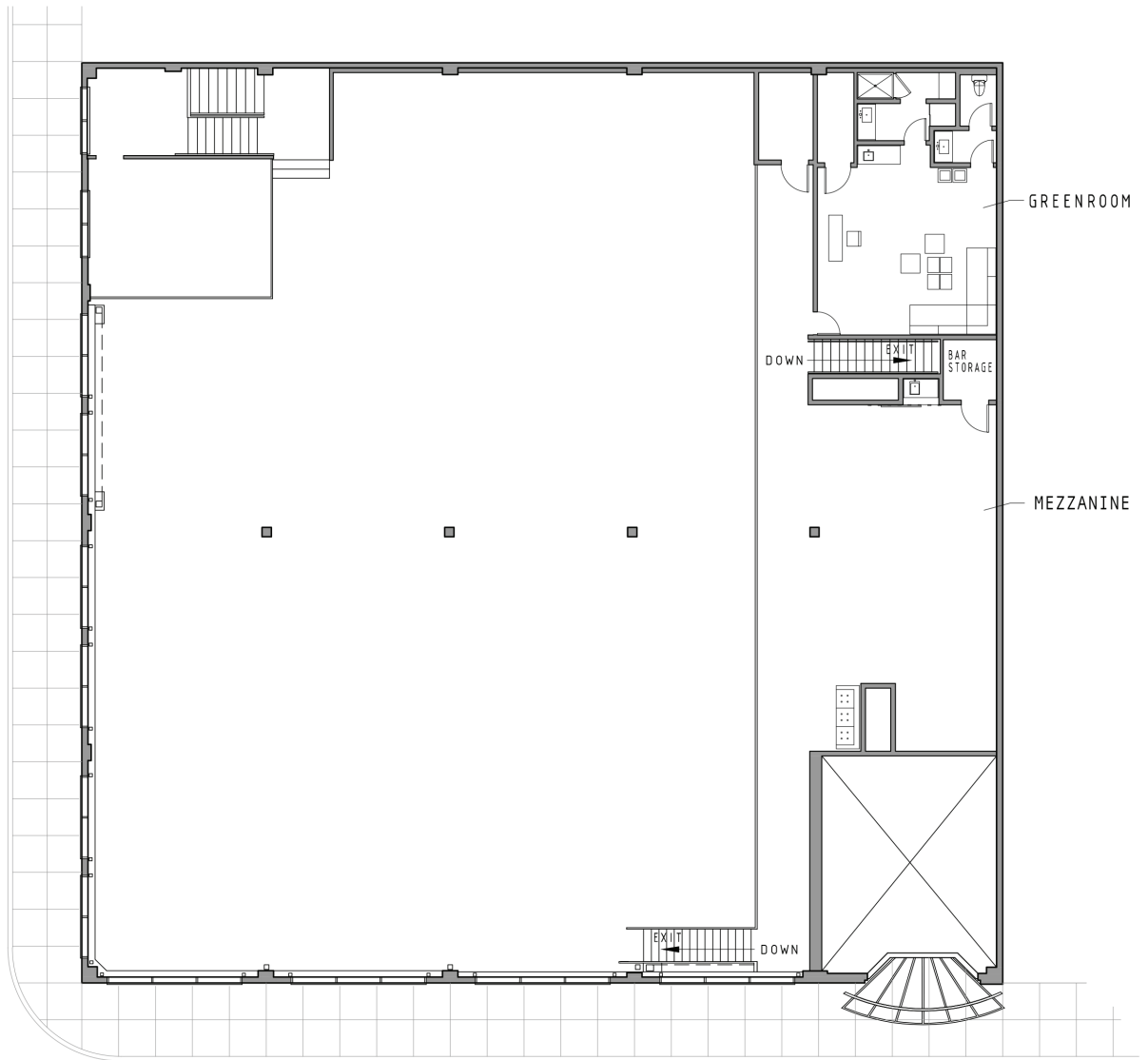
Valid for bookings from January 1st-December 30th, 2021 | Terms subject to change based on COVID-19 mandates & OHA regulations.

LEFTBANK ANNEX

A PORTLAND EVENT SPACE

101 N WEIDLER STREET | VENUES@ELEPHANTSDELI.COM

GREATROOM FLOOR PLAN



GREATROOM CAPACITY

SPACE	SQUARE FOOTAGE	MAXIMUM CAPACITY	SEATED DINNER 15 sf pp	RECEPTION 7 sf pp	THEATER STYLE 12 sf pp
Greatroom	6,800	936	450	936	560
Mezzanine	503	73	34	73	41
Nest <i>(available only with greatroom)</i>	282	included with Greatroom	na	na	na
Greenroom <i>(available only with mezzanine)</i>	350	included with Mezzanine	na	na	na
Entire Floor	7,303	1,009	484	930	tbd